

# How to update CREATOR pro DAP firmware V1.0

Shenzhen Rakwireless Technology Co., Ltd.

[www.rakwireless.com](http://www.rakwireless.com)

[info@rakwireless.com](mailto:info@rakwireless.com)

© RAK copyright. All rights reserved.

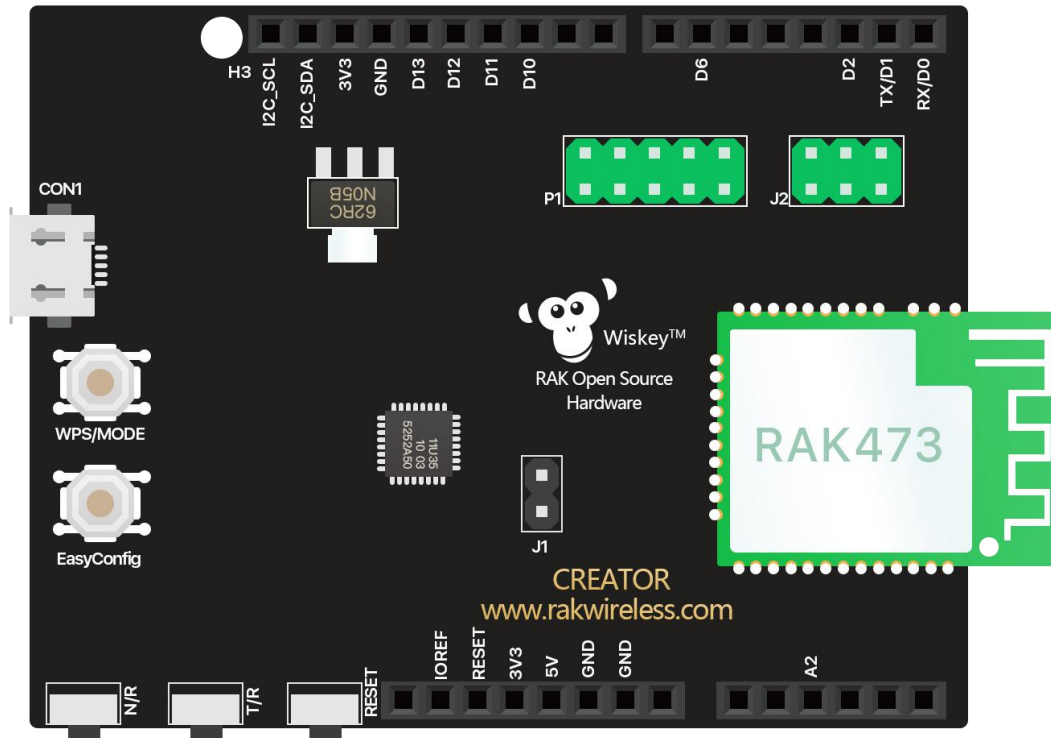
Companies and product names referred in the instruction belong to trademarks of their respective owners.

Any part of this document may not be reproduced, and may not be stored in any retrieval system, or delivered without RAK's written permission.

The document will be updated without prior notice.

## 1. Board Information

- IC: RTL8711AM
- Module: RAK473
- HDK version: CREATOR pro V1.0

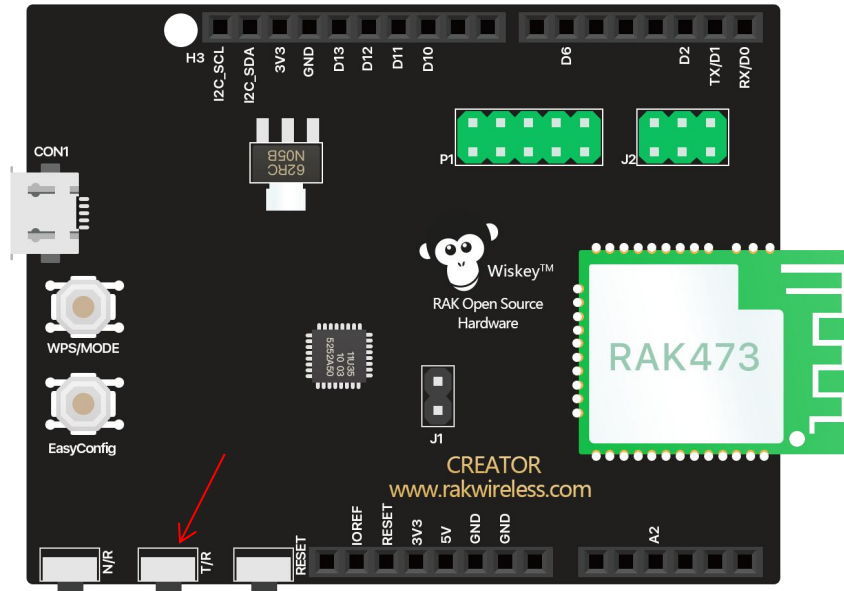


Label	Function	Description
J1	Power pin	The pin used to test the power consumption of the module
J2	UART switch pin	Can be used to switch CON1 connected to the serial port
CON1	Power	To the module power supply, and do serial output information
P1	JLINK	Available for JLINK download program
Key	WPS/MODE	Backup
	EasyConfig	Backup
N/R	DAP Reset	Reset DAP chip button
T/R	DAP ISP function	Start DAP ISP button
RESET	RESET	Reset the RAK473 module(Reset 8711AM)

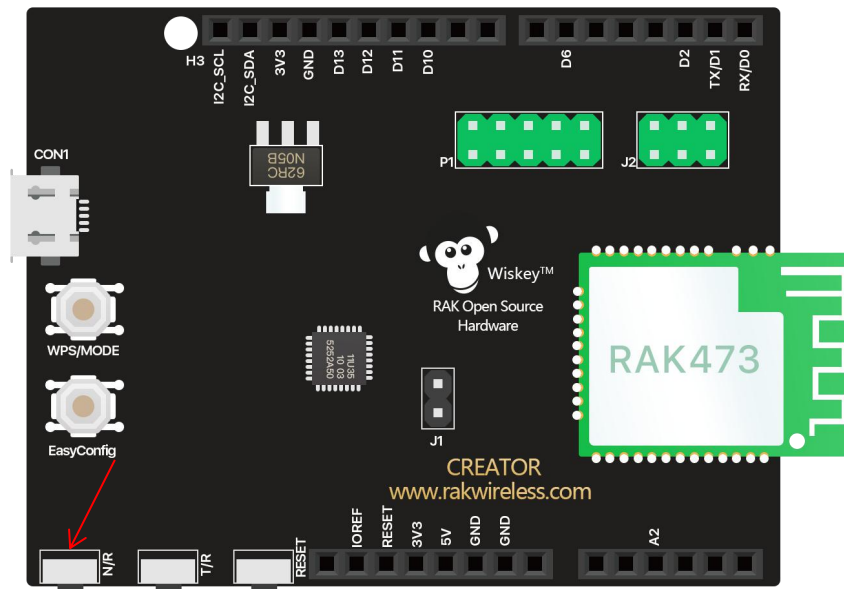
## 2. Replace the DAP firmware

To update DAP firmware, please follow the steps:

① Connect the module to the computer, and then press and hold the T / R button. Hold down until the next step.



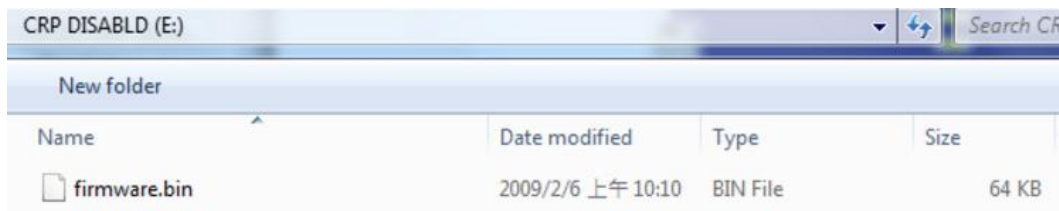
② And then press the N / R button, do not have to hold down, press after the release.



③Release the T / R button,At this point you can see on your computer the name of the disk "CRP DISABLED"



④Click to open "CRP DISABLED", you will find a file named "firmware.bin", which is the DAP firmware currently used in CREATOR pro:



⑤After replacing this firmware,replug the USB, and the new firmware should work normally.

How to get the latest DAP firmware, see the steps below.

### 3. DAP firmware download

Since the CREATOR pro is used for the RTL8711 chip, the DAP firmware is provided by Realtek. The user can download the latest DAP firmware from the following link.

<https://www.amebaiot.com/en/change-dap-firmware/>

(NOTE:RTL8195 and RTL8711 are compatible)

Below is the DAP firmware list for ARDUINO/Standard SDK:

Version	LED	Speed Improvement	Recommend	Link
DAP_FW_Ameba_V10_2_3-2M	On	✓		<a href="#">Download</a>
DAP_FW_Ameba_V10_2_3-2M_LED_Disable	Off	✓		<a href="#">Download</a>
DAP_FW_Ameba_V10_2_2-2M	On		✓	<a href="#">Download</a>
DAP_FW_Ameba_V10_2_2-2M_LED_Disable	Off			<a href="#">Download</a>

Below is the DAP firmware list for ARM mbed:

Version	Description	Link
DAP_FW_MBED_RTL8195AM_V0	ARM Mbed DAP firmware, support target REALTEK_RTL8195AM	<a href="#">Download</a>

## 4. Version

Version	Author	Date	Content modification
V1.0	chace.cao	2017/06/15	Create document